

PHILIPS

Lighting



HF-Performer II for PL-T/C/R/L/TL5C lamps

HF-P 2 22-42 PL-T/C/L/TL5C EII 220-240V

HF-Performer EII PL-T/C/R/T5c is a sustainable, slim and high-frequency electronic ballast for a wide range of CFL- ni applications. It is ideal for applications where high energy efficiency is required. The HF-Performer EII range has a robust design, meets all relevant international safety and performance standards and is energy-efficient (CELMA EEI A2).;The ballast is primarily designed for Indoor application. For outdoor application, the luminaire should be minimum Classland need to be sufficiently protected against water & dust. The installation should also be guard against any lightning surge or any other necessary electrical protection as deemed in such typical installation & application.

Product data

General Information		Ignition Time (Max)	
Application Code	EII		0.52 s
Type Version	mk4	Mains Voltage Performance (AC)	-8%+6%
Lamp Type	PL-T/C/L/TL5C	Mains Voltage Safety (AC)	-10%+10%
Number of Lamps	2 piece/unit	Earth Leakage Current (Nom)	0.5 mA
Number of Products on MCB (16A Type B) (Nom)	12	Inrush Current Width	0.35 ms
Automatic Restart	Yes	Constant Wattage Deviation	-2%/+2%
Operating and Electrical		Ballast Factor (Nom)	1
Input Voltage	220 to 240 V	Power Losses (Nom)	4.35-4.93 W
Input Frequency	50 to 60 Hz	Inrush Current Peak (Max)	31 A
Operating Frequency (Max)	- kHz	Wiring	
Operating Frequency (Min)	42 kHz	Connector Type Input Terminals	Insert
Operating Frequency (Nom)	45 kHz	Cable Capacity Output Wires Mutual (Nom)	100 pF
Ignition Method	Warm Start	Connector Type Output Terminals	Insert
Crestfactor (Max)	1.7	Cable Length Hot Wiring	0.75 m
Power Factor 100% Load (Nom)	0.95	Wire Striplength	7.5-8.5 mm

HF-Performer II for PL-T/C/R/L/TL5C lamps

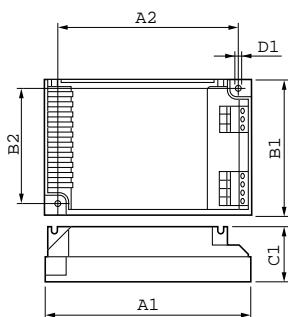
Dual Fixture Master/Slave	Not applicable [Master/Slave oper. not applicable]
Input Terminal Cross Section	0.50-1.50 mm ²
Output Terminal Cross Section	0.50-1.50 mm ²
Cable Capacity Output Wires to Earth (Nom)	100 pF
System characteristics	
Rated Ballast-Lamp Power	22-42 W
Rated Lamp Power on PL-T/C	22/42 W
Temperature	
T-Ambient (Max)	50 °C
T-Ambient (Min)	-25 °C
T-Storage (Max)	80 °C
T-Storage (Min)	-40 °C
T-Case Lifetime (Nom)	75 °C
T-Case Maximum (Max)	75 °C
T-Ignition (Max)	50 °C
T-Ignition (Min)	-25 °C
Emergency Operation	
Battery Voltage Lamp Ignition	198-254 V
Battery Voltage Lamp Operation	176-254
Approval and Application	
Energy Efficiency Index	A2
IP Classification	IP 20 [Ingress Protection 20]
EMI 9 kHz ... 30 MHz	EN55015

EMI 30 MHz ... 1000 MHz	EN55022 level B
Safety Standard	IEC 61347-2-3
Performance Standard	IEC 60929
Quality Standard	ISO 9000:2000
Environmental Standard	ISO 14001
Harmonic Current Emission Standard	IEC 61000-3-2
EMC Immunity Standard	IEC 61547
Vibration Standard	IEC68-2-6 F c
Bumps Standard	IEC 68-2-29 Eb
Humidity Standard	EN 61347-2-3 clause 11
Approval Marks	CE marking ENEC certificate VDE-EMV certificate
Temperature Marking	Yes
Emergency Standard	IEC 60598-2-22
Hum And Noise Level	Inaudible

Product Data

Full product code	871150091399930
Order product name	HF-P 2 22-42 PL-T/C/L/TL5C EII 220-240V
EAN/UPC - Product	8711500913999
Order code	913700630866
Numerator - Quantity Per Pack	1
Numerator - Packs per outer box	12
Material Nr. (12NC)	913700630866
Net Weight (Piece)	0.150 kg

Dimensional drawing



HF-P 2 22-42 PL-T/C/L/TL5C EII 220-240V

Product	D1	C1	A1	A2	B1	B2
HF-P 2 22-42 PL-T/C/L/TL5C EII 220-240V	4.5 mm	30.0	103.0	93.5	67.0	57.5
TL5C EII 220-240V		mm	mm	mm	mm	mm

HF-Performer II for PL-T/C/R/L/TL5C lamps

